

AGENDA PLACEMENT FORM

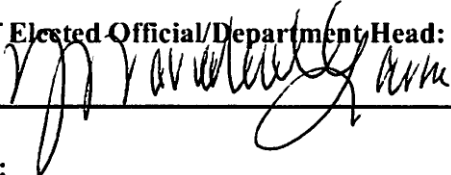
(Submission Deadline – Monday, 5:00 PM before Regular Court Meetings)

Date: April 14, 2026

Meeting Date: April 27, 2026

Submitted By: Julie Edmiston

Department: Development Services

Signature of Elected Official/Department Head:




Description: Workshop to Discuss Final Proposed NTTA 360 Tollway Extension Alignments.

(May attach additional sheets if necessary)

Person to Present: _____
(Presenter must be present for the item unless the item is on the Consent Agenda)

Supporting Documentation: (check one) PUBLIC CONFIDENTIAL
(PUBLIC documentation may be made available to the public prior to the Meeting)

Estimated Length of Presentation: _____ minutes

Session Requested: (check one)
 Action Item Consent Workshop Executive Other _____

Check All Departments That Have Been Notified:
 County Attorney IT Purchasing Auditor
 Personnel Development Services Facilities Management

Other Department/Official (list) _____

**Please List All External Persons Who Need a Copy of Signed Documents
In Your Submission Email**



JOHNSON COUNTY COMMISSIONERS COURT

Christopher Boedeker
County Judge

Rick Bailey
Commissioner
Precinct 1

Kenny Howell
Commissioner
Precinct 2

Mike White
Commissioner
Precinct 3

Larry Woolley
Commissioner
Precinct 4

THE STATE OF TEXAS

§

RESOLUTION 2026-11

COUNTY OF JOHNSON

§

§

RESOLUTION OF SUPPORT FOR THE NORTH TEXAS TOLLWAY AUTHORITY'S PROPOSED ALIGNMENT ALTERNATIVE GREEN OPTION BLUE FOR THE EXTENSION OF 360T

WHEREAS, the continued growth and development of Johnson County necessitate the expansion and improvement of transportation infrastructure to ensure safe, efficient, and reliable mobility for residents, businesses, and visitors; and

WHEREAS, the North Texas Tollway Authority (NTTA) has proposed an extension of 360 Tollway (360T) to improve regional connectivity, reduce traffic congestion, and enhance economic development opportunities; and

WHEREAS, the proposed alignment of the 360T extension has been developed through planning efforts that consider engineering feasibility, environmental factors, and regional transportation needs; and

WHEREAS, the extension of 360T is expected to provide significant benefits to Johnson County, including improved access to major transportation corridors, support for commercial and residential growth, and enhanced emergency response capabilities; and

WHEREAS, Johnson County recognizes the importance of coordinated regional planning and supports infrastructure projects that align with long-term transportation goals for North Texas.

NOW, THEREFORE, BE IT RESOLVED BY THE COMMISSIONERS COURT OF JOHNSON COUNTY, TEXAS, THAT:

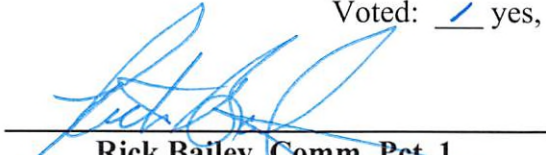
1. The Commissioners Court hereby expresses its support for the North Texas Tollway Authority's proposed alignment Alternative Green Option Blue for the extension of 360T as shown in Exhibit A attached hereto.
2. The Court encourages continued collaboration among NTTA, the Texas Department of Transportation (TxDOT), regional planning organizations, and local stakeholders to advance the project in a manner that serves the best interests of Johnson County residents.
3. The Court supports efforts to secure necessary funding, approvals, and partnerships to facilitate the timely development and construction of the 360T extension.
4. The County Judge is authorized to communicate this support to NTTA and other relevant agencies.

Said Resolution was moved and approved on this, the 27th day of April 2026.



Christopher Boedeker, Johnson County Judge

Voted: yes, no, abstained



Rick Bailey, Comm. Pct. 1

Voted: yes, no, abstained



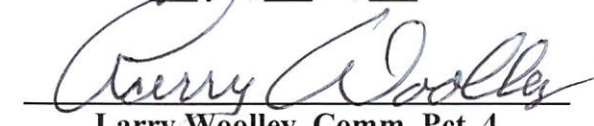
Kenny Howell, Comm. Pct. 2

Voted: yes, no, abstained



Mike White, Comm. Pct. 3

Voted: yes, no, abstained



Larry Woolley, Comm. Pct. 4

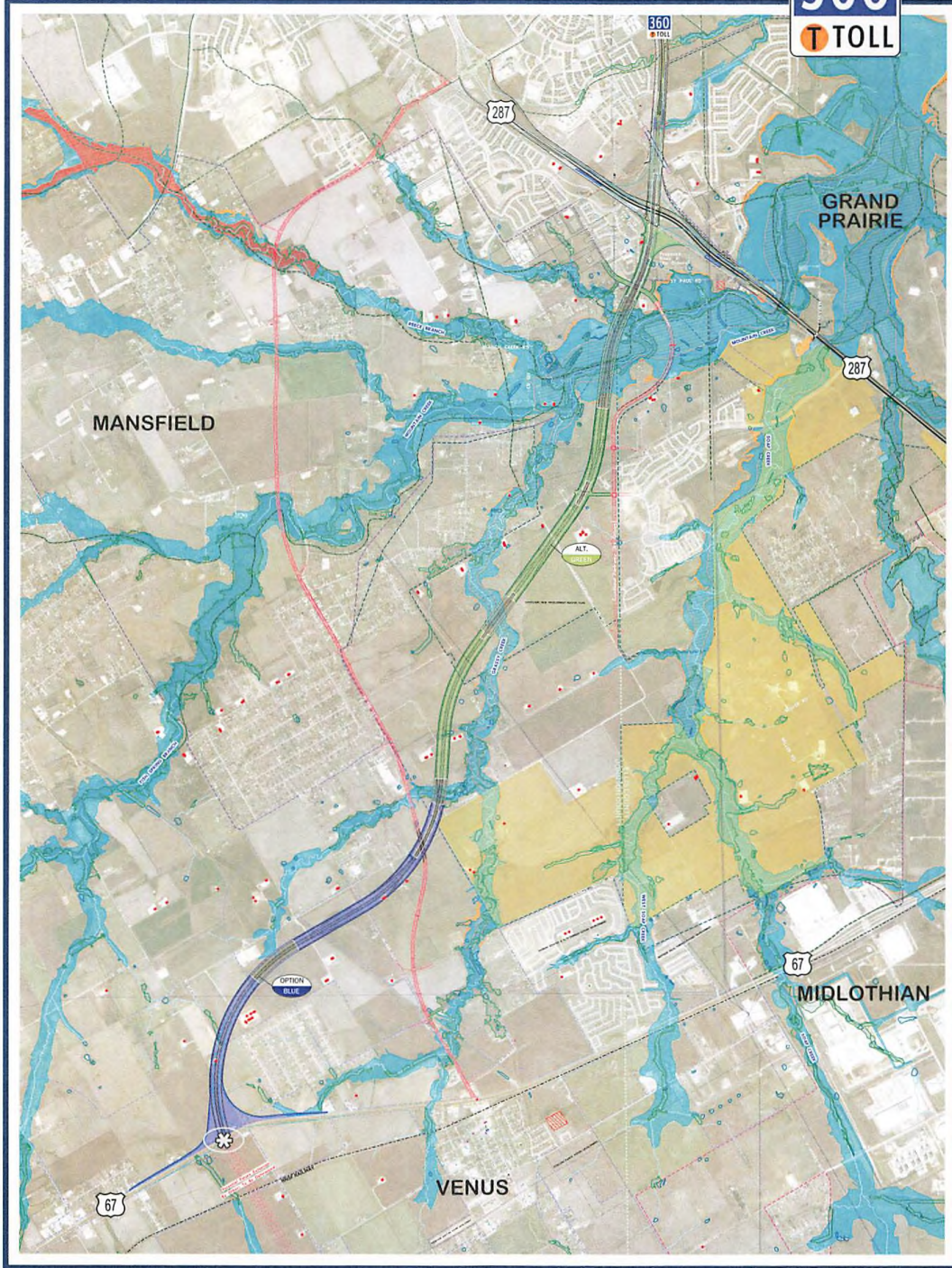
Voted: yes, no, abstained



ATTEST: April Long, County Clerk

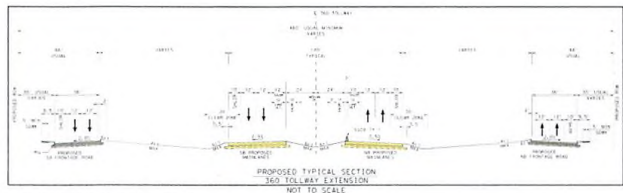


Short-Listed ALTERNATIVE GREEN - OPTION BLUE Combination
EXHIBIT A April 16, 2026



LEGEND

- PROPERTY LINE (APPROXIMATE)
- CITY LIMITS (APPROXIMATE): CITY OF GRAND PRAIRIE
- CITY LIMITS (APPROXIMATE): CITY OF MANSFIELD
- CITY LIMITS (APPROXIMATE): CITY OF MIDLOTHIAN
- CITY LIMITS (APPROXIMATE): CITY OF VENUS
- COUNTY LINE (APPROXIMATE)
- RAILROAD
- TRANSMISSION LINES (AS SHOWN ON MAP)
- SEWER AND TRUNK LINES
- FENCE (GUY)
- CEMETERY (TMC)
- POTENTIAL OF ANCHOR REGIONAL VEGETATION - 60-140 FOOT
- POTENTIAL OF ANCHOR REGIONAL VEGETATION - 60-140 FOOT
- PLANNED DEVELOPMENT ZONE
- APPROVED
- ACTIVE OILFIELD WELLS
- HISTORICAL MONUMENT (TMC)
- LIENS FIELDS
- EDUCATIONAL FACILITIES
- HISTORIC SITE
- RECREATIONAL FACILITIES
- WATERWAY (DRAIN)
- WATERWAY (DRAIN)
- POTENTIAL WETLANDS
- WATERWAY (DRAIN)
- FLUORIDATION
- WATER (TRENCH)
- ASBESTOS (TRENCH)
- GROUNDWATER FACILITIES
- PLACE OF WORSHIP



360 TOLLWAY EXTENSION TYPICAL SECTION (SEE SCALE)

360 TOLLWAY EXTENSION TYPICAL SECTION (SEE SCALE)

NOTES:

1. All utility lines shown are based on the latest available information. Utility lines shown are not to be construed as a guarantee of their location or depth.
2. All utility lines shown are based on the latest available information. Utility lines shown are not to be construed as a guarantee of their location or depth.
3. All utility lines shown are based on the latest available information. Utility lines shown are not to be construed as a guarantee of their location or depth.
4. All utility lines shown are based on the latest available information. Utility lines shown are not to be construed as a guarantee of their location or depth.
5. All utility lines shown are based on the latest available information. Utility lines shown are not to be construed as a guarantee of their location or depth.